

Emerald Resilient Tyre Manufacturers Pvt Ltd - Market leader in industrial tyre and wheel segment in india offers customised solutions through it's range of products that meets the diversified requirements of material handling industry at large in the globe.

Emerald supplies Industrial Wheels of International standards for Forklifts, GSE Trolleys, Pavers as per T & RA / ETRTO standards and form part of our wide range of products for Industrial applications.

Emerald offers value added service to OEM & Replacement market through the supply of Tyre fitted with rim as Tyre-Wheel assembly.

# INDUSTRIAL WHEEL RIMS



## FEATURES

- Manufactured as per ETRTO & TRA international standards for dimensions and load rating
- High quality Mild Steel - HRPO for improved processability and high quality performance
- Wheel mounting hole profile designed for high precision
- Stringent process and quality control for 100% defect-free product



## SPLIT / DIVIDED / TWO-PIECE RIM



SIZE RANGE					
8	9	9.75	10	12	15
3.00D-8	4.00E-9	3.75-9.75	5.00F-10	5.00S-12	5.50-15
3.75-8			5.50F-10		6.0-15
4.33R-8					6.50-15
					7.00-15
					8.00-15

## MULTI-PIECE RIM



SIZE RANGE			
15	16	20	24
5.50 - 15	5.50 - 16	6.00 - 20	8.50 - 24
6.00 - 15	6.00 - 16	7.00 - 20	
6.50 - 15		7.50 - 20	
7.00 - 15		8.00 - 20	
8.00 - 15			

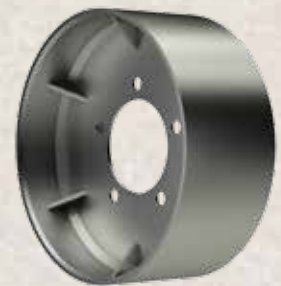
## WHEEL AND HUB TYPE – PRODUCT RANGE

Emrald manufactures the following types of wheels to cater to the varying tyre wheel assembly requirements of its customers

- Split rim – Zero Offset
- Split rim – Offset
- Split rim – Bearing Housing
- Wheel Hub for Press-on Tyre
- Base wheel for Direct Bonded Wheel



PRESS ON HUB



DIRECT BONDING WHEEL

## RECOMMENDATIONS

- Compatibility of Tyre & Wheel to be checked before fitment
- Wheel studs and nut to be torqued to the recommended setting and checked periodically
- Wheel rims to be checked for its deformity, damage, cracks, corrosion
- In case of Pneumatics - Tyres should be fully deflated before demounting the wheel rim
- Fitment of wheel rims to be done by trained personnel using proper fitment tools & gadgets